

Class 'C' General Knowledge Test - Practice Questions

Compiled from the General Knowledge Question Bank July 2014

Numbers in square brackets [] are the original Question Bank numbers

Miscellaneous

- Trips
- Towing
- Breakdowns
- Hooning
- Reversing
- Radar Detectors
- Seats & Mirrors

TRIPS

1. [43] **When going on a long trip, out of the following which is the most important to do?**
 - (a) Get plenty of rest before starting out.
 - (b) Have a good meal before driving.
 - (c) Make sure your horn is working.

2. [247] **Before driving long distances, which of the following should you do?**
 - (a) Make sure your vehicle has enough fuel, oil, water and the correct tyre pressure.
 - (b) Take your street directory in case you get lost.
 - (c) Take something to calm your nerves before driving.

3. [251] **Before driving a long distance or carrying a full car load, you should -**
 - (a) Check your tyre pressure, and if necessary, increase it to what the manufacturer recommends.
 - (b) Have a large meal and a cup of coffee.
 - (c) Make sure you have a street directory, so you know where you are going.

4. [301] **You set out on a fairly long drive to see some friends. After a while you start feeling tired. What should you do?**
 - (a) Make sure you get plenty of fresh air circulating inside the car by winding down your window.
 - (b) Stop at a shop and get a drink that contains caffeine to help keep you awake.
 - (c) Pull off the road, stop and rest until you no longer feel tired.

TOWING

- 5.** [248] **Are you permitted to drive a car towing more than one trailer?**
- (a) Yes, if the combined length of vehicle and trailers does not exceed 15 meters.
 - (b) No, not at all.
 - (c) Yes, provided you have held a licence for two years.
- 6.** [249] **What must you do when you are towing a caravan to help other vehicles overtake?**
- (a) Drive at least 25 km/h below the speed limit.
 - (b) Stop immediately and let the faster vehicle overtake.
 - (c) Keep at least 200 metres behind heavy vehicles or other vehicles towing caravans.
- 7.** [250] **Are you permitted to tow a caravan with a person riding in the caravan?**
- (a) No, not under any circumstances.
 - (b) Yes, if the person(s) in the caravan are over 12 years of age.
 - (c) Yes, provided you do not exceed 60 km/h.

BREAKDOWNS

- 8.** [238] **If you breakdown, you should -**
- (a) Stay where you are and wait for a tow truck.
 - (b) Move over to the shoulder on the left lane.
 - (c) Move into the right-hand lane, so you can be seen.

HOONING

- 9.** [325] **If the police suspect you may have been involved in street or drag racing, they may take immediate action. Which one of the following is correct? The police may -**
- (a) Take your vehicle from you and keep it stored for up to 48 hours.
 - (b) Take your vehicle to the local police station and keep it till the following morning.
 - (c) Take your vehicle away and sell it at an auction.
- 10.** [326] **If you are convicted a second time for street or drag racing, which one of the following penalties applies?**
- (a) You will have to pay for the storage of your vehicle.
 - (b) You will not be able to register your vehicle again.
 - (c) Your vehicle may be taken away and sold.

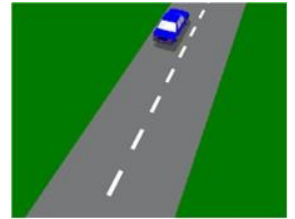
11. [327] If you are charged for street or drag racing, which of these penalties may apply?

- (a) You will get three demerit points and a large fine.
- (b) You will be given a letter of warning and fined.
- (c) You will be fined a small amount and get one demerit point.

REVERSING

12. [240] When reversing, you should -

- (a) Unbuckle your seat belt so you can reverse as quickly as possible.
- (b) Sound your horn to warn other drivers.
- (c) Take care and never reverse for a greater distance and time than is necessary.



RADAR DETECTORS

13. [343] Having a radar detector in your car is against the law -

- (a) Only if it is turned on.
- (b) If you purchased it after 1998.
- (c) No matter what your reason is.

SEATS & MIRRORS

14. [259] You borrow a friend's car and find that the position of the driver's seat puts you sitting a long way from the steering wheel and controls. What should you do?

- (a) Put up with the discomfort; you should not adjust another person's seat.
- (b) Ask your friend for a cushion to place behind your back.
- (c) Adjust the seat forward so it's right for you.

15. [269] Which side mirror is adjusted best?

- (a) Mirror A.
- (b) Mirror B.
- (c) Mirror C.

