

Class 'C' General Knowledge Test - Practice Questions

Compiled from the General Knowledge Question Bank July 2014

Numbers in square brackets [] are the original Question Bank numbers

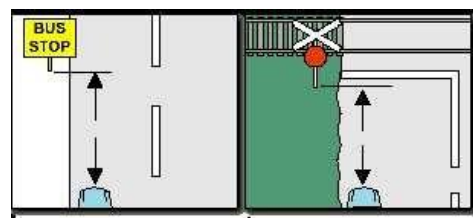
Parking

1. [2] **Where there is parallel kerbside parking, are you allowed to double-park alongside a parked vehicle?**

- (a) No, not at any time.
- (b) Yes, if delivering goods.
- (c) Yes, if not obstructing traffic.

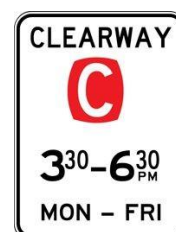
2. [16] **Looking at the diagrams, how far from the approach side of a bus stop or a railway crossing are you allowed to stand or park your vehicle?**

- (a) At least 5 metres.
- (b) At least 50 metres.
- (c) At least 20 metres



3. [198] **When you see this sign you –**

- (a) May stop at any time to pick up or drop off passengers.
- (b) Must not stop here at any time.
- (c) Must not stop your vehicle at the kerb during the times shown.



4. [220] **What does this sign mean?**

- (a) Vehicles must not stop at the kerb, unless picking up goods.
- (b) Vehicles are not allowed to stop at the kerb except in a medical emergency.
- (c) Vehicles must not stop at the kerb, except if picking up a passenger.



5. [234] **What does this sign mean?**

- (a) Vehicles may park in this area for up to ten minutes.
- (b) Motorcyclists may park in this area.
- (c) Only vehicles carrying a disabled person and displaying a mobility parking authority may park in this area.



- 6.** [241] **How close can you park to another vehicle when parked parallel to the kerb?**
- (a) You must leave at least 1 metre front and back.
 - (b) You must leave at least 3 metres front and back.
 - (c) You must leave at least 2 metres from the front only.
- 7.** [242] **Do you have any responsibilities when opening a vehicle door on a roadway?**
- (a) No, there is no regulation to cover this situation.
 - (b) No, any following traffic must stop if the door interferes with its progress.
 - (c) Yes, you must not open a door if you are likely to cause danger to road users or impede traffic.
- 8.** [243] **Are you permitted to park on a median strip or traffic island?**
- (a) Yes, but for no more than 30 minutes.
 - (b) No, not at any time.
 - (c) Yes, in daylight hours.

- 9.** [244] **Are you permitted to park in the direction of the arrow?**
- (a) Yes, if you are carrying two or more passengers.
 - (b) No, not at any time.
 - (c) Yes, provided no taxis are using the area.



- 10.** [263] **You want to leave your automatic car parked on a street sloping uphill. You should -**
- (a) Park only on flat areas.
 - (b) Turn the wheels away from the kerb.
 - (c) Put the handbrake on and put the transmission in "P" (park).

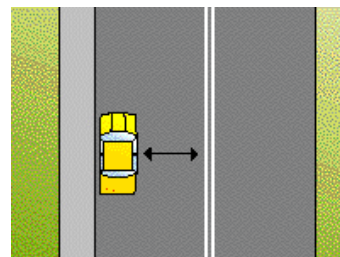


- 11.** [264] **Which vehicle is parked correctly?**
- (a) Vehicle B.
 - (b) Vehicle C.
 - (c) Vehicle A.



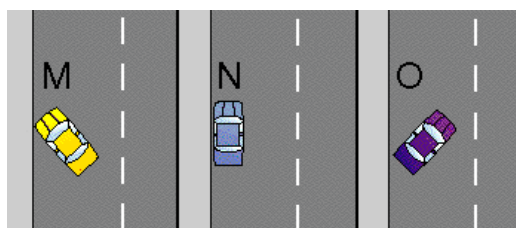
12. [265] Where there are double dividing lines, you may park -

- (a) At least two meters from the dividing lines.
- (b) At least three meters from the dividing lines.
- (c) One meter from the dividing lines.



13. [266] If there are no signs or markings to advise you, can you choose any of these methods of parking?

- (a) Yes. M, N and O are all legal.
- (b) Yes, N is best but M and O are quite legal.
- (c) No, only N is correct.



14. [267] You should angle park -

- (a) Where there are markings or a sign indicating angle park.
- (b) Where the road is very wide.
- (c) Where there is plenty of room from the centre line.



15. [279] You are driving your vehicle along a street and want to stop for a short time. Are you allowed to double park your vehicle (that is stand it on the road alongside a parked car)?

- (a) Yes, provided you stop for a short time only and turn on your hazard warning lights.
- (b) No, never.
- (c) Yes, provided you do not leave the vehicle.

