

Class 'C' General Knowledge Test - Practice Questions

Compiled from the General Knowledge Question Bank July 2014

Numbers in square brackets [] are the original Question Bank numbers

Intersections & Turning

1. [45] **As you approach an intersection, you should check for traffic on your left and right-**

- (a) Only when the traffic is heavy.
- (b) At all times before entering the intersection.
- (c) Only when you approach a stop sign.

2. [51] **When you come to an intersection and the road beyond is choked with vehicles going in the same direction, what should you do?**

- (a) Wait until there is room for you to completely cross the intersection.
- (b) Travel into the intersection and wait until traffic ahead moves.
- (c) Proceed if there is no traffic on your right.



3. [52] **Right-turns must be made from which lanes when travelling on a laned roadway?**

- (a) The far right-hand lane or any other lane having an arrow pointing right.
- (b) The lane carrying the least amount of traffic.
- (c) The far left-hand lane

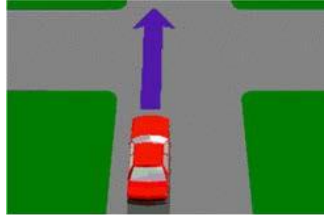
4. [55] **If both vehicles P and O in the diagram are turning right, which vehicle is in the best position to turn left into the street marked 'X'?**

- (a) Vehicle O.
- (b) Neither vehicle.
- (c) Vehicle P.



5. [61] **You wish to make a right-hand turn from a ONE WAY STREET with no arrows marked on the roadway. You should position your vehicle -**

- (a) On the left-hand side of the street.
- (b) In the middle of the street.
- (c) On the right-hand side of the street.

- 6. [62] When there are no arrows marked on the road, left turns must be made from -**
- (a) The far left-hand side of the road.
 - (b) Either side of the road.
 - (c) The middle of the road.
- 7. [68] You are in the car approaching the intersection shown, you should -**
- (a) Flash your lights to let other vehicles know that you are coming.
 - (b) Drive carefully and approach at a speed which gives you good time to avoid traffic which might suddenly appear.
 - (c) Come to a complete stop before you come to the intersection.
- 
- 8. [69] You approach an intersection in busy traffic and want to go straight ahead. The traffic lights turn green. When are you permitted to enter the intersection?**
- (a) When the vehicle behind signals you to go.
 - (b) Only when there is room for your vehicle on the other side.
 - (c) Immediately after the traffic lights turn green.
- 9. [75] When police officers are at intersections giving directions you must -**
- (a) Wait for the traffic lights to start working again.
 - (b) Always follow any instruction they give you.
 - (c) Drive through the intersection as you normally would.
- 10. [87] If you enter an intersection that is under the control of a traffic controller -**
- (a) Stop at the intersection and then proceed slowly.
 - (b) Sound your horn at the traffic controller and hope they get out of your way.
 - (c) Follow the directions of the controller.
- 11. [89] If you are approaching a cyclist riding on the road and you are planning to turn left at an intersection close by, you should -**
- (a) Be patient and wait until the cyclist is clear of the intersection.
 - (b) Beep your horn and flash your lights to get them to move out of the way.
 - (c) Speed up and quickly overtake the cyclist before they reach the intersection.

12. [116] You wish to turn left at this intersection and the traffic lights are green. What should you do?

- (a) Move forward slowly, make the left turn and wait behind car A.
- (b) Enter the intersection and sound the horn.
- (c) Wait behind the stop line until there is room for you to enter the new road.



13. [176] You are driving behind a long vehicle (as shown) which has a sign saying **DO NOT OVERTAKE TURNING VEHICLE**. The long vehicle indicates that it is going to turn left. You -

- (a) May move to the left-hand side of the road and pass the long vehicle.
- (b) May pass the truck because it cannot turn left from the middle lane.
- (c) Must let the long vehicle turn first.



14. [305] You are at a busy intersection with slow moving traffic and want to go straight ahead. When the traffic lights change to green you should make sure that -

- (a) You do not hold up the traffic behind you.
- (b) You have the car in the right gear.
- (c) You do not block the intersection.



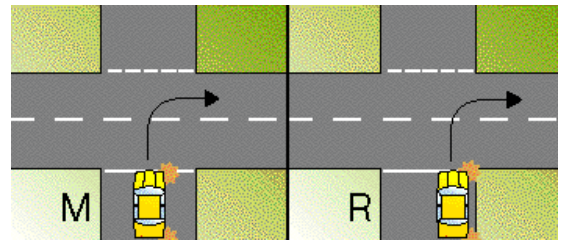
15. [306] The traffic on the other side of this intersection has stopped. You are in the car shown and want to cross the intersection. The lights are green. What should you do?

- (a) Wait until there is enough room for your vehicle to cross the intersection completely.
- (b) Drive into the intersection and then turn left.
- (c) Drive through the intersection slowly and hope that it will clear before the lights change



16. [319] You are going to turn right from a one-way street. Where should you be when you start your turn?

- (a) Any position if it is safe to do so.
- (b) Position M. From the middle of the road.
- (c) Position R. As close as possible to the right side of the road.



17. [311] You are in car A and want to turn right at this intersection. Car B facing you is also indicating to turn right. What path should you take?

- (a) Choose either depending on the traffic.
- (b) Both pass in front of each other.
- (c) Pass behind each other.

